

UNIVERSAL SYSTEMS



ADVANCED 2°C TO 8°C CONTROL WITHOUT PRECONDITIONING

Universal Systems are refrigerated shippers that combine evaporative cooling technology with phase change material (PCM) to ensure the integrity of your products. When combined, the steady evaporative cooling effect is augmented by the PCM component to protect against external temperature spikes. Our evaporative cooling is seven times more powerful than gel packs or ice. It works by transferring internal heat to the outside through evaporation of a small amount of water stored at low pressure inside the package. Evaporation takes place at low temperatures and creates a powerful cooling effect. The active cooling process adjusts to variations in ambient temperature in a way that conventional cooling systems cannot.

WHY CHOOSE UNIVERSAL SYSTEMS?

- Available in 48 Hour and 96 Hour configurations
- Reduced freight costs
- Less warehouse space
- Lower inventory costs
- No need for freezers or refrigeration

UNIVERSAL SYSTEMS

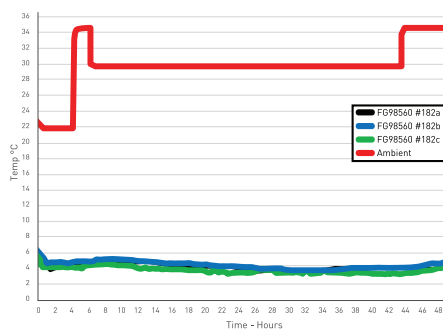
TEMPERATURE

2°C to 8°C

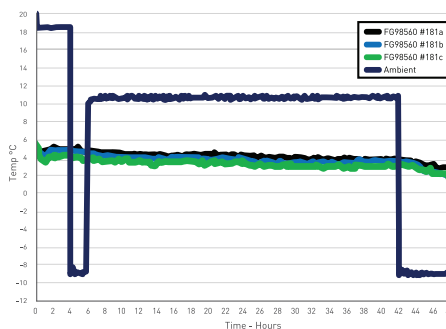
DURATION

48 hours
96 hours

Universal System 48-Hour Summer Qualification Graph



Universal System 48-Hour Winter Qualification Graph



PELI
BIO THERMAL™

UNIVERSAL SYSTEMS

ACTIVATING IS AS EASY AS 1-2-3

Easily portable, Universal Systems arrive ready to activate and ship. There's no need to freeze and condition coolants or worry whether they have been conditioned correctly.



1. Open box, remove cooling engine and place silver foil side down on a flat surface. Push straight down on the activation button.
2. Notice the NanoCool logo turning blue between 30 seconds and 3 minutes indicating cooling has begun. Confirm by touching the surface of the cooling engine near the activation button.
3. Load product into the payload compartment, replace the cooling engine, close the box and tape shut prior to shipping.

UNIVERSAL SYSTEMS PRODUCT SPECIFICATION

| | Product | Temperature (Celsius) | Duration (Hours) | Outer dimensions (inches) | Usable space (inches) | Weight (pounds) | DIM weight (pounds) |
|-----------|----------------------|-----------------------|------------------|---------------------------|-----------------------|-----------------|---------------------|
| 2°C - 8°C | 2-85361 | 2-8°C | 48 | 12.1 x 7.9 x 8.5 | 8.5 x 4.7 x 3.0 | 7.5 | 7 |
| | Long Haul 2-85396 | 2-8°C | 96 | 12.1 x 7.9 x 9.9 | 8.5 x 4.7 x 2.7 | 9.4 | 7 |
| | 2-98560 | 2-8°C | 48 | 13.9 x 12 x 10.3 | 9.5 x 8.7 x 4.5 | 11.8 | 13 |
| | Long Haul 2-98596 | 2-8°C | 96 | 14.2 x 12 x 12 | 9.5 x 8.7 x 4.8 | 17.2 | 15 |

FOR MORE INFORMATION ABOUT PELI BIOTHERMAL PRODUCTS, PLEASE CONTACT:

EMEA OFFICE - INFONANOCOOL@PELIBIOTHERMAL.COM T: +44 (0)1525 243 770

AMERICAS OFFICE - INFONANOCOOL@PELIBIOTHERMAL.COM T: +1(763) 412-4800 TOLL FREE US: T: +(877) 537-9800

ASIA OFFICE - INFONANOCOOL@PELIBIOTHERMAL.COM T: +65 6681 0095

PELIBIOTHERMAL.COM

ISO17025, ISO9001-2008 Accredited

Golden Hour™, TIC™, Crêdo™, Crêdo Cube™, Crêdo ProEnvision™, Crêdo Xtreme™, Crêdo Duracube™, Crêdo ProMed™, Sherpa Systems™, CoolGuard™ and CoolPall™ are registered trademarks of Pelican Products Inc., its subsidiaries and / or affiliates



©2021 Peli BioThermal Ltd all rights reserved