

INSULCAP®

THERMAL COVERS



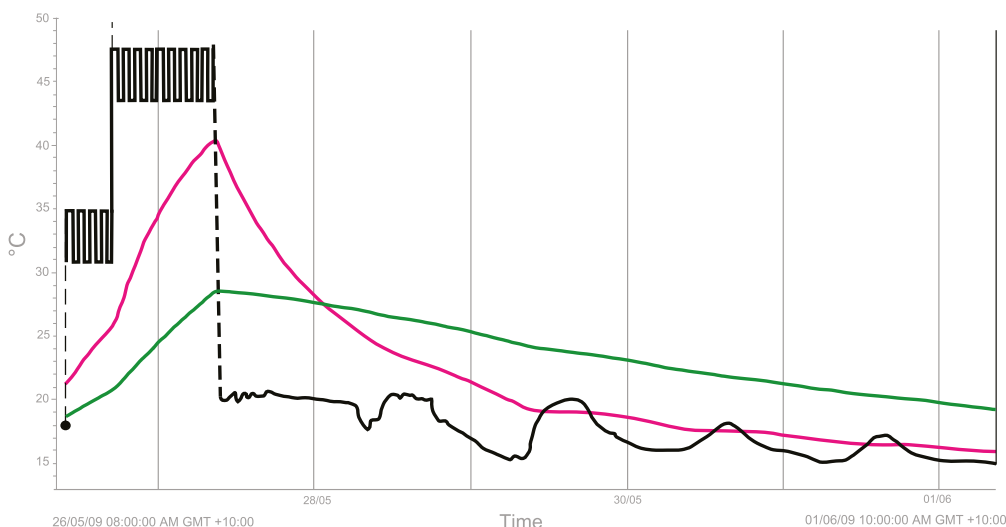
INSULCAP THERMAL PALLET COVERS

- Thermal barrier systems enclose the palletised product to provide an protected thermal environment, that passively manages product temperature during storage and transport. An InsulCap® cover is constructed from a range of thermal barrier materials; innovations designed by Wilpak Group International.

WHY CHOOSE INSULCAP THERMAL COVERS?

- A range of custom InsulCap® pallet covers; InsulPrime, InsulGold, InsulPlatinum Plus
- Our InsulPlatinum® Plus barrier is a heavy duty large air cylinder material which offers maximum protection for temperature sensitive goods, while our InsulPrime® barrier is a general-purpose material at a affordable price.
- Exclusively Distributed Globally by Peli BioThermal

— Insulcap® Protected Drum °C
 — Without Insulcap® Insulation °C
 — Test Conditions/Oven Teme °C



**EXCELLENT
THERMAL
PROTECTION**

**TOUGH THERMAL
BARRIER
MATERIAL**

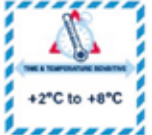

**LIGHTWEIGHT
PALLET COVER
SYSTEM**

**CUSTOM CUT
PROFILES
AVAILABLE IN
150MM
INCREMENTS**

INSULCAP THERMAL BARRIER MATERIAL PROPERTIES

Material	Reflective Barrier	Air cylinder	Barrier Thickness	Thermal Rating
InsulPlatinum Plus	2 (foil external/internal)	25+mm	12mm	5 Maximum
InsulGold	2 (foil external)	25+mm	10mm	4 High
InsulPrime	1 (foil external)	10mm	5mm	1 Affordable

THERMAL BARRIER MATERIAL

REQUIRED TEMPERATURE RANGE OF GOODS		EXTERNAL EXPOSURE TEMPERATURE	EXPOSURE DURATION							
			Hrs Mins	1 60	2 120	4 240	6 360	8 480	8+ 480+	
2°C 8°C  +2°C to +8°C Chilled	less than -10°C								Performance Varies Based on Application	
	-10°C to 0°C									
	0°C to 10°C		INSULGOLD							
	10°C to 20°C									
	20°C to 30°C		INSULPLATINUM [®]							
	30°C to 40°C						PLUS			
15°C 25°C  +15°C to +25°C Ambient	less than -10°C							Performance Varies Based on Application		
	-10°C to 0°C		INSULPLATINUM [®]							
	0°C to 10°C					PLUS				
	10°C to 20°C									
	20°C to 30°C		INSULGOLD							
	30°C to 40°C									

FOR MORE INFORMATION ABOUT PELI BIOTHERMAL PRODUCTS, PLEASE CONTACT:

INFO@PELIBIOTHERMAL.COM T: +44 (0)1525 243 770 PELIBIOTHERMAL.COM

ISO17025, ISO9001-2008 Accredited

Golden Hour™, TIC™, Crêdo™, Crêdo Cube™, Crêdo ProEnvision™, Crêdo Xtreme™, Crêdo Duracube™, Crêdo ProMed™, Sherpa Systems™, CoolGuard™ and CoolPall™ are registered trademarks of Peli BioThermal Ltd., its subsidiaries and/or affiliates.



©2020 PELI BioThermal all rights reserved.