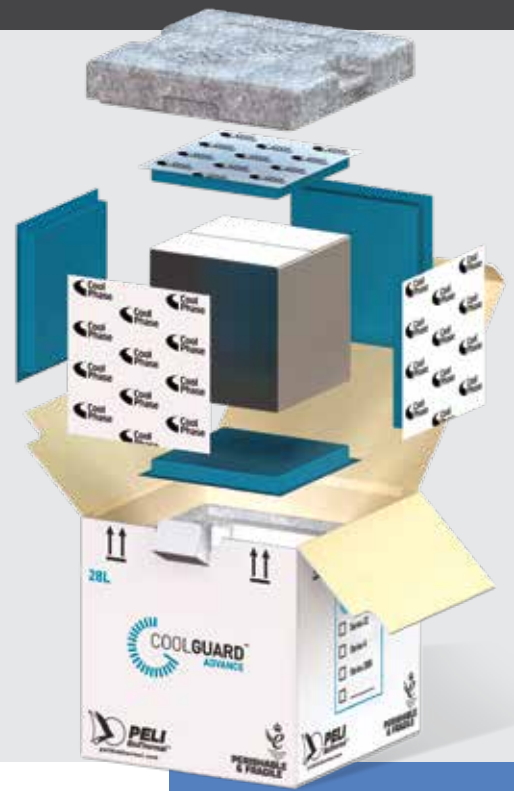




# COOLGUARD<sup>TM</sup> ADVANCE



## SETTING NEW STANDARDS IN SINGLE-USE SHIPPERS

CoolGuard<sup>TM</sup> Advance is our range of high-performance single-use shipping systems with phase change materials and vacuum insulated panels. This shipper is designed and tested to ensure maximum protection of valuable payload through use of standardized components with simple, error-free assembly.

## WHY CHOOSE COOLGUARD<sup>TM</sup> ADVANCE?

- Superior temperature stability of 72 - 120+ hours
- High-performance VIP and PCM technology reduces excursions and increases compliance while providing a low total cost of ownership
- Achieves industry leading payload to external volume ratios, reducing storage and distribution costs
- Quick, simple, and error-free packing process with single-temperature, one size PCM coolants interchangeable between CoolGuard<sup>TM</sup> Advance and CoolGuard<sup>TM</sup> PCM ranges
- Hibernation can be achieved at any point during transit, resulting in longer temperature compliant shipments



## COOLGUARD<sup>TM</sup> ADVANCE

### DURATION

72 - 120+ hours

### TEMPERATURE

#### SERIES 4

2°C to 8°C

#### SERIES 22

15°C to 25°C

#### SERIES 20M

-20°C

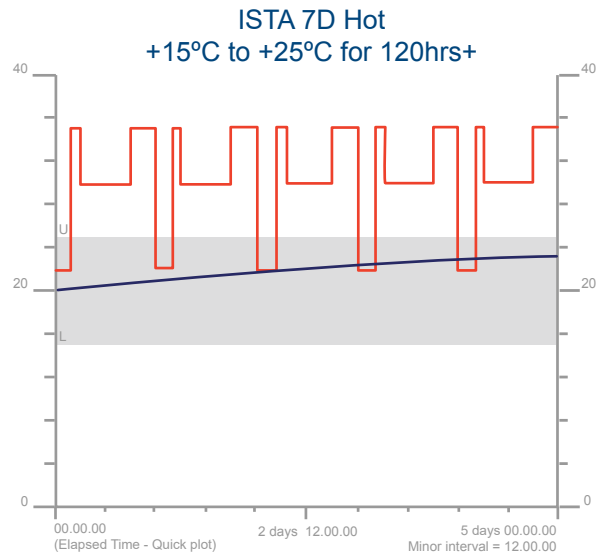
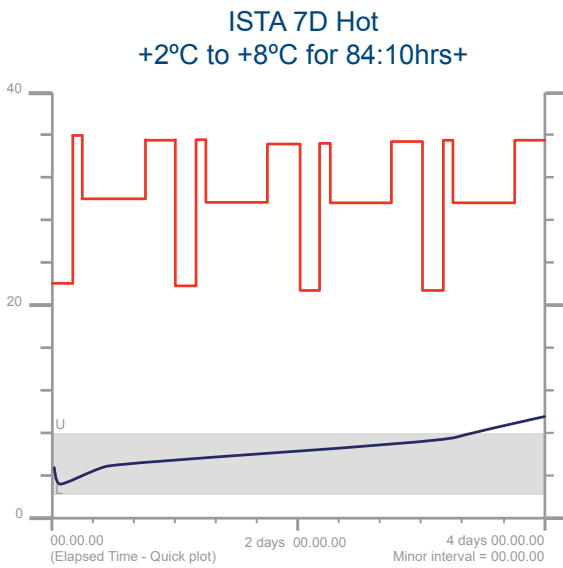
### VOLUME

4L, 12L, 28L,  
56L, 96L

# COOLGUARD™ ADVANCE PRODUCT SPECIFICATION

Payload Size	Exterior Dimensions - mm	Interior Dimensions - mm	Tare Weight - kg
<b>Series 4; 2C - 8C, Series 22; 15C - 25C</b>			
4L	310 x 310 x 312	152 x 152 x 152	4
12L	395 x 395 x 395	230 x 230 x 230	9
28L	460 x 460 x 470	297 x 297 x 305	14
56L	552 x 552 x 558	381 x 381 x 381	22
96L	630 x 630 x 636	457 x 457 x 457	30
<b>Series 20M - 20C</b>			
4L	310 x 310 x 312	152 x 152 x 152	6
12L	395 x 395 x 395	230 x 230 x 230	13
28L	460 x 460 x 470	297 x 297 x 305	18
56L	552 x 552 x 558	381 x 381 x 381	27
96L	630 x 630 x 636	457 x 457 x 457	38

## ADDITIONAL DATA



FOR MORE INFORMATION ABOUT PELI BIOTHERMAL PRODUCTS, PLEASE CONTACT:

INFO@PELIBIOTHERMAL.COM T: +44 (0)1525 243 770 PELIBIOTHERMAL.COM

ISO17025, ISO9001-2008 Accredited

Golden Hour™, TIC™, Crêdo™, Crêdo Cube™, Crêdo ProEnvision™, Crêdo Xtreme™, Crêdo Duracube™, Crêdo ProMed™, Sherpa Systems™, CoolGuard™ and CoolPall™ are registered trademarks of Peli BioThermal Ltd., its subsidiaries and/or affiliates.



©2020 PELI BioThermal all rights reserved.