

Credo®

Credo® 4

Temperature
+2°C to +8°C

Duration
Up to 185 hrs

Volume
Up to 865ltrs

Credo® 22

Temperature
+15°C to +25°C

Duration
Up to 144 hrs

Volume
Up to 865ltrs

Credo® 20M

Temperature
-20°C

Duration
Up to 187 hrs

Volume
Up to 865ltrs

Returnable and Reusable Credo® System

Our range of passive Vacuum Insulated Panels (VIP), Phase Change Material (PCM) Temperature Controlled Packaging from Minnesota Thermal Science (MTS) adds further strength and credibility to the existing product portfolio. This product range provides a truly reusable solution to meet your environmental demands.

Credo® Thermal packaging solutions are available in all temperature ranges, +2°C to +8°C, +15°C to +25°C, -15°C to -25°C, (-50°C and colder are available upon request). These solutions consist of phase change materials, which, are specifically formulated for the unique needs of diverse medical materials, from super frozen tissue to room temperature and fridge temperature vaccines and pharmaceuticals.



“CREDO® containers offer a universal solution for temperature sensitive materials, from blood and tissue to medical samples and pharmaceuticals.”

Why choose Credo® Systems

- A new modular design provides efficiency in storage and simplicity in preparation and pack outs.
- The Thermal Isolation Chamber (TIC) - consists of six separate yet interlocking walls which completely surround the payload, providing greater temperature performance and overall payload protection.
- Customisable wall dimensions enable the Credo range to be uniquely suited to varying packaging design requirements, resulting in significant savings in shipping costs and packing time.



Credo® Series 4 +2°C to +8°C

Product Description	External Dimensions (mm)	Internal Product Space (mm)	Internal Product Vol (lts)	Total System Weight (kgs)	Duration (hrs)
2L Series 4 2 72	276 x 251 x 241	152 x 127 x 108	2	4.4	82
4L Rep Shipper Bag Series 4 4 24	265 X 265 X 265	190 X 150 X 185	5.3	3.2	24
4L Series 4 4 96	318 x 267 x 267	152 x 152 x 152	4	5	84
4L Series 4 4 120	381 x 330 x 343	152 x 152 x 152	4	7.9	102
12L Series 4 12 96	381 x 330 x 343	229 x 229 x 229	12	9.3	87
12L Series 4 12 168	445 x 406 x 406	229 x 229 x 229	12	14.4	159
16L Series 4 16 96	400 x 356 x 359	254 x 254 x 254	16.4	11.6	85
16L Series 4 16 168	410 x 410 x 416	254 x 254 x 254	16.4	14.6	166
28L Series 4 28 96	457 x 419 x 432	305 x 305 x 305	28.4	16	102
28L Series 4 28 168	533 x 495 x 502	305 x 305 x 305	28.4	22.8	160
56L Series 4 56 96	533 x 495 x 502	381 x 381 x 381	55.3	24.9	112
56L Series 4 56 168	686 x 686 x 660	381 x 381 x 381	55.3	47.6	187
96L Series 4 96 96	686 x 686 x 660	457 x 457 x 457	95.4	47.7	126
Pallet series 4 Half Stack	1219 x 1016 x 762	1041 x 838 x 457	398.7	166	111
Pallet Series 4 Full stack	1219 x 1016 x 1321	1041 x 838 x 990	863.6	248	116

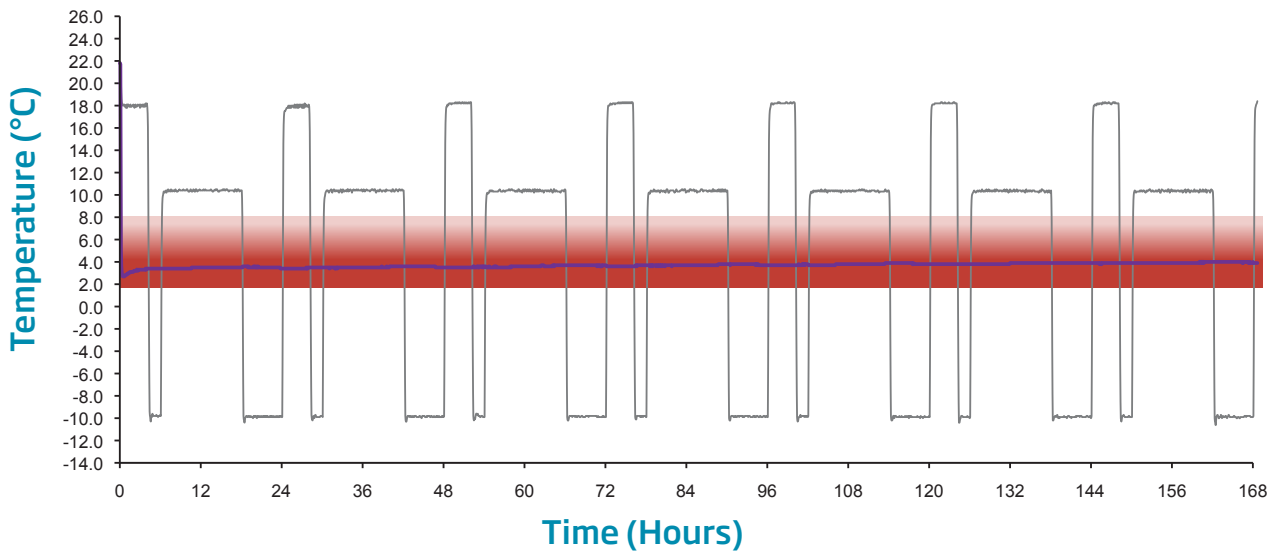
Credo® Series 22 +15°C to +25°C

Product Description	External Dimensions (mm)	Internal Product Space (mm)	Internal Product Vol (lts)	Total System Weight (kgs)	Duration (hrs)
4L Series 22 4 96	318 x 267 x 267	152 x 152 x 152	4	5	48
12L Series 22 12 96	381 x 330 x 343	229 x 229 x 229	12	9.3	57
12L Series 22 12 168	445 x 406 x 406	229 x 229 x 229	12	14.4	133
16L Series 22 16 96	400 x 356 x 359	254 x 254 x 254	16.4	11.6	123
16L Series 22 16 168	410 x 410 x 416	254 x 254 x 254	16.4	14.6	168
28L Series 22 28 96	457 x 419 x 432	305 x 305 x 305	28.4	16	80
28L Series 22 28 168	533 x 495 x 502	305 x 305 x 305	28.4	22.8	167
56L Series 22 56 96	533 x 495 x 502	381 x 381 x 381	55.3	25.4	120
56L Series 22 56 168	686 x 686 x 660	381 x 381 x 381	55.3	47.6	147
96L Series 22 96 96	686 x 686 x 660	457 x 457 x 457	95.4	47.7	132
Pallet series 22 Half Stack	1219 x 1016 x 762	1041 x 838 x 457	398.7	168	144
Pallet Series 22 Full stack	1219 x 1016 x 1321	1041 x 838 x 990	863.6	249	144

Credo® Series 20M -20°C

Product Description	External Dimensions (mm)	Internal Product Space (mm)	Internal Product Vol (lts)	Total System Weight (kgs)	Duration (hrs)
4L Series 20M 4 72	318 x 267 x 267	152 x 152 x 152	4	6.4	61
4L Series 20M 4 96	381 X 330 X 343	152 X 152 X 152	4	8.8	86
12L Series 20M 12 96	381 x 330 x 343	229 x 229 x 229	12	11.8	89
12L Series 20M 12 168	445 x 406 x 406	229 x 229 x 229	12	14.5	155
16L Series 20M 16 96	400 x 356 x 359	254 x 254 x 254	16.4	14.4	95
16L Series 20M 16 168	476 X 428 X 435	254 X 254 X 254	16.4	18.8	137
28L Series 20M 28 96	457 x 419 x 432	305 x 305 x 305	28.4	19.1	94
28L Series 20M 28 168	533 x 495 x 502	305 x 305 x 305	28.4	26.6	184
56L Series 20M 56 96	533 x 495 x 502	381 x 381 x 381	55.3	24.9	123
56L Series 20M 56 168	686 x 686 x 660	381 x 381 x 381	55.3	47.6	168
96L Series 20M 96 96	686 x 686 x 660	457 x 457 x 457	95.4	63.9	140
Pallet series 20M Half Stack	1219 x 1016 x 762	1041 x 838 x 457	398.7	184	105
Pallet Series 20M Full stack	1219 x 1016 x 1321	1041 x 838 x 990	863.6	277	105

Credo® Winter Profile Example



“Tested to ISTA standards the CREDO® series is ready for real world action.”

Modular design
efficiency in
storage &
improved packouts

**Interlocking
Isolation Chamber**
improved performance
and payload protection

**Customisable
Wall dimensions**
optimise
shipping costs

For more information about Peli BioThermal products, please contact:
Email: info@pelibiothermal.com
Tel: +44 (0) 1525 243770

www.pelibiothermal.com



©2014 PELI BioThermal all rights reserved.